

Critical Wind and Wildfires Rapid Impact Assessment

Brief #2, February 10, 2025

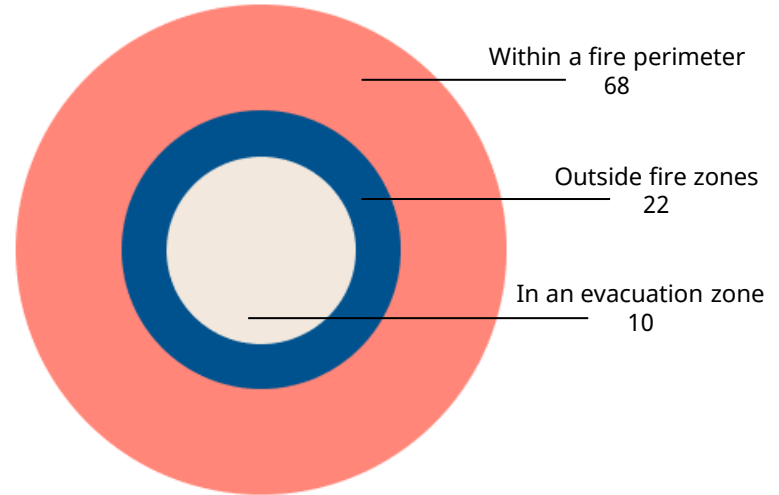
This brief summarizes preliminary findings from the [Rapid Impact Assessment](#) launched on January 29 to measure the impact of the critical windstorm and fire events emergency on the arts and culture community.

100 individual artists and **48 arts organizations and institutions** have responded to the surveys, as of noon on February 6.

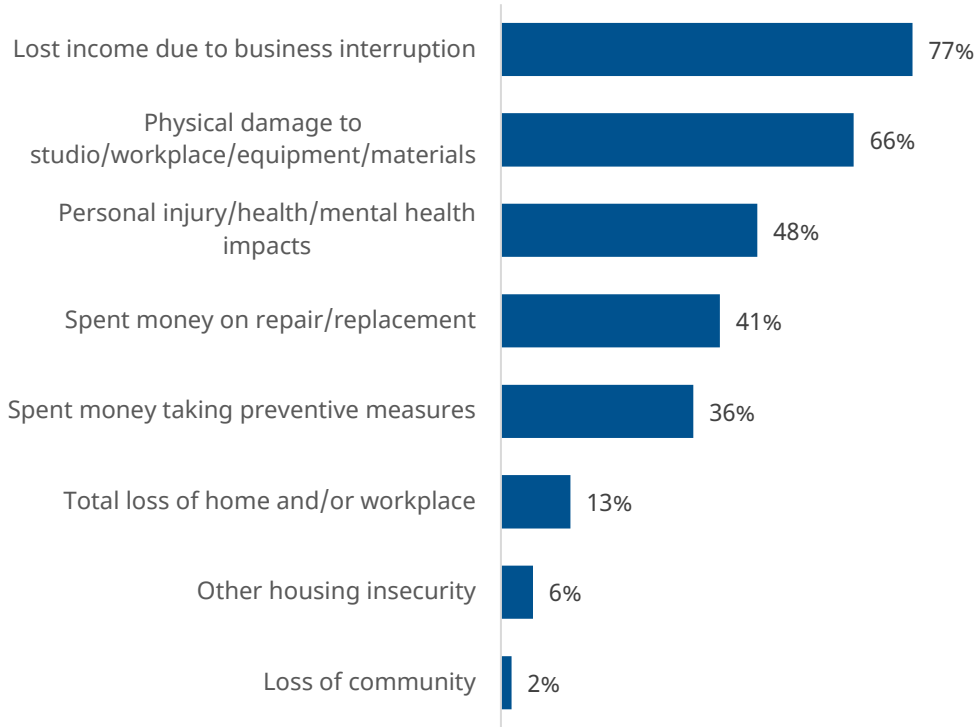
As more artists and organizations respond to the survey, we are learning more about the ripple effects of the emergency across the region. In addition to those who were displaced from their homes and places of work, others who live outside the fire perimeter and outside the evacuation zones have experienced work disruptions, loss of income, and physical and mental health problems.

If you were impacted by the fires – directly or indirectly – and haven't yet completed the survey, we encourage you to take it: ncaper.org/rapidimpactassessment

Individual artist locations



Impacts on individual artists (n=100)



Individual artists

30 percent of respondents are visual artists, 17 percent are musicians, and 15 percent are multidisciplinary.

The rest include design (7 percent), theater (7 percent), interdisciplinary (6 percent), and seven other disciplines. On average, they have 23 years of experience working as artists, ranging from two years to more than 60.

The largest share of artists who have responded to this survey – 68 percent – lived or worked within one of the fire zones (see chart previous page). Ten percent were within one of the evacuation zones, and 22 percent were located outside the fire zones.

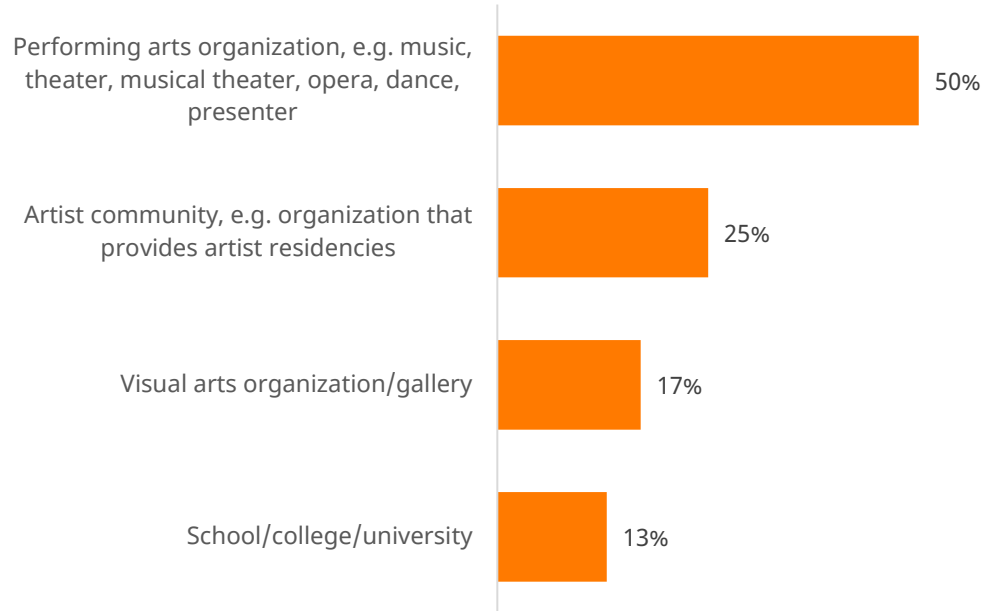
Arts organizations and institutions

Of the 48 arts organizations and institutions that have responded so far, 61 percent have headquarters locations in the City of Los Angeles and 28 percent in Pasadena. Two are located in Santa Monica.

While 28 of them reported they are fully functional, nine experienced physical damage but are able to operate at full capacity. Four are operating at reduced capacity and five are fully unable to operate. Five reported damage to materials including costumes, props, collections, archival materials, or administrative records. Five did not yet know if they had sustained such damage.

At the time of response, two of these organizations had applied for federal disaster assistance, and nine planned to apply.

Top four respondent organization types (n=48)

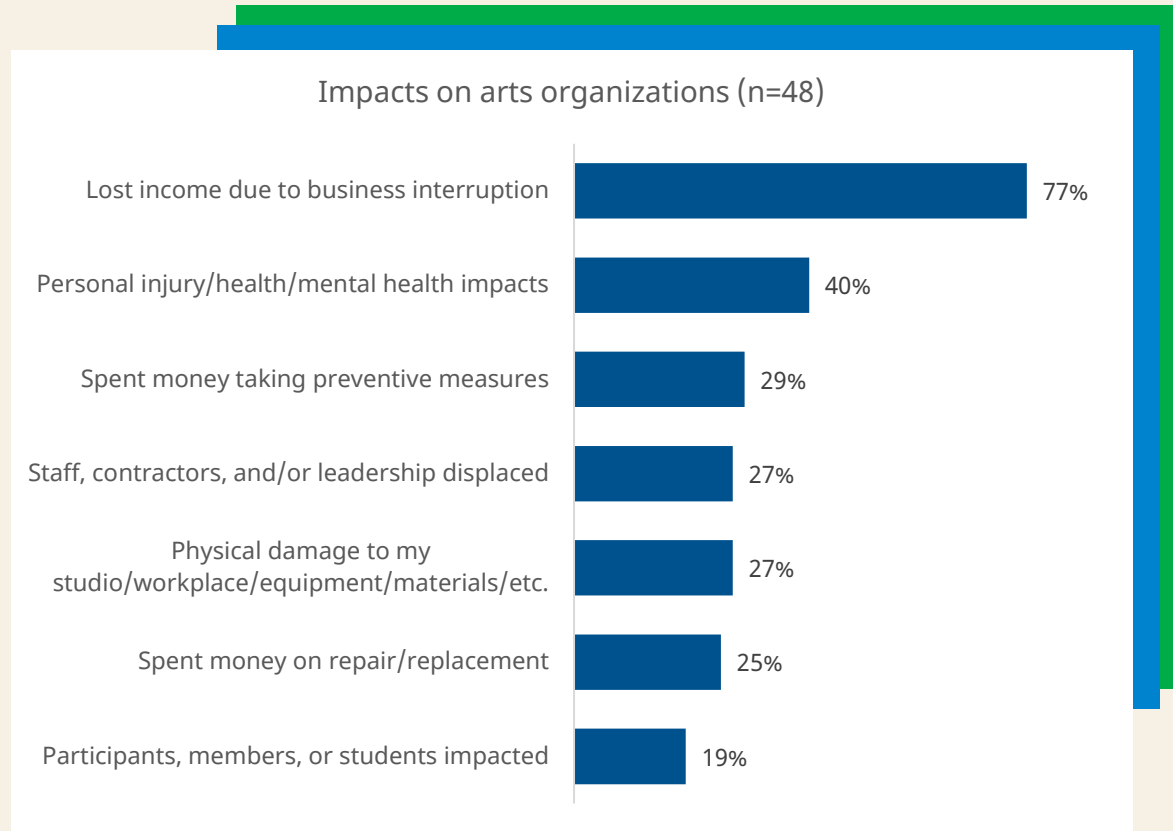


Arts organizations and institutions

As the figure on this page shows, 77 percent of responding arts organizations have experienced loss of income. In addition,

- A quarter of them have spent money on repair or replacements.
- Nearly 20 percent of them reported that the emergency has had direct impacts on their participants, members, or students.
- For thirteen percent, donors or other major supporters were impacted by the fires.

Despite the challenges they face, 14 percent of organizations reported they have been actively engaged in providing support to members and participants or their local community.



Of the arts organizations and institutions that have responded, two had headquarters located within one of the fire perimeters. Thirteen were located within an evacuation zone and 33 were located outside the fire zones.

Summary

This is not a complete report of all impact on the arts and culture community. Artists, creatives, arts organizations, and cultural institutions are continuing to respond to the [Rapid Impact Assessment](#) surveys, and we will continue to keep them open for as long as needed.

More information is available at our [Wildfire Impact Reporting](#) page.

Arts organizations and institutions locations

